

RESOURCE DEVELOPMENT AND HUMAN WELL-BEING
IN PAPUA NEW GUINEA:

ISSUES IN THE MEASUREMENT OF PROGRESS

Gateway Hotel, March 17-19, 2015



MASSEY UNIVERSITY

Thinking beyond the numbers:
Issues with the political economy of data collection in
Papua New Guinea

Associate Professor Glenn Banks
Massey University

Outline

- What have we learnt?
- How does this match the realities of the Papua New Guinea social and political environment?
- Ways forward – ‘D4D’

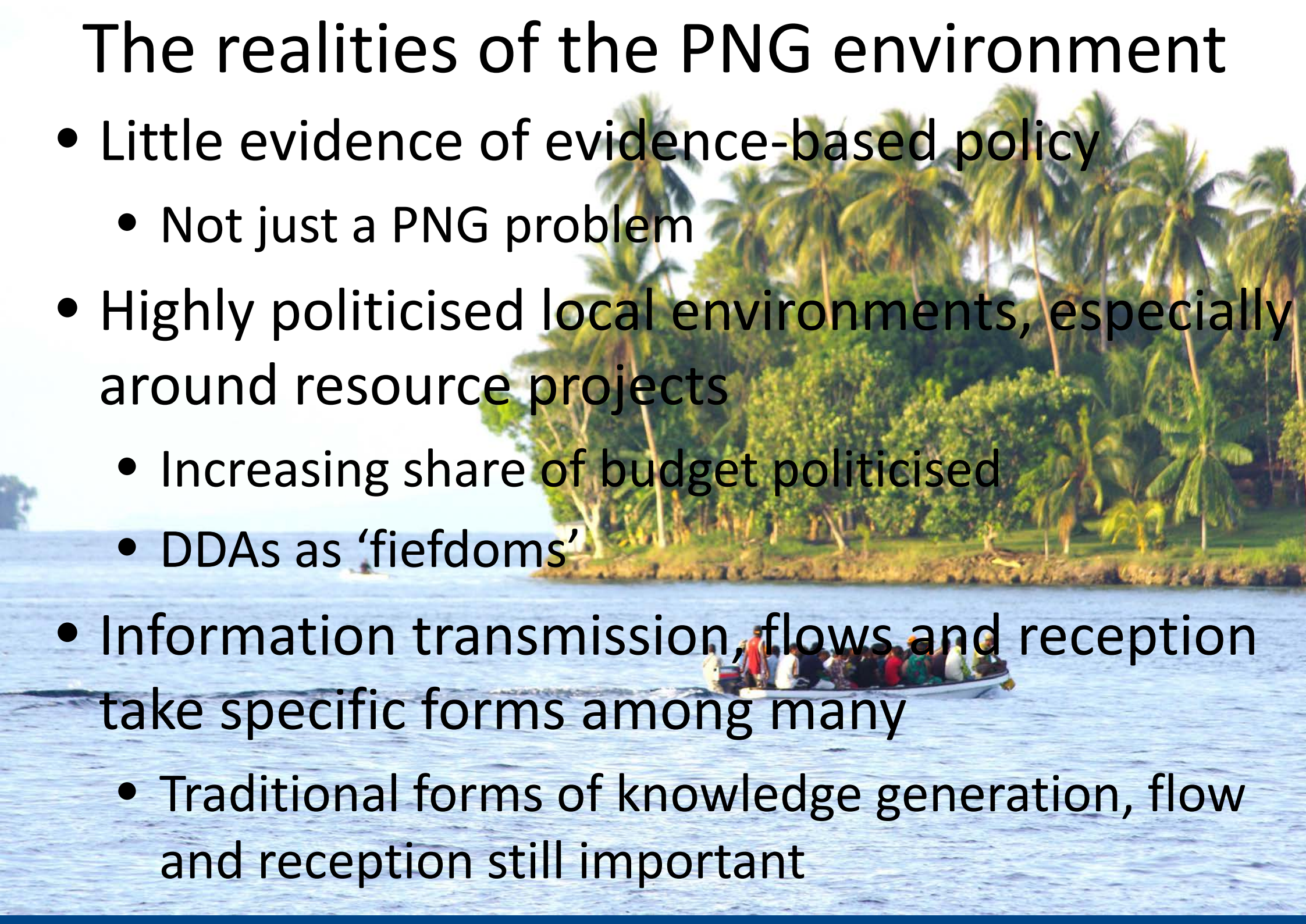
What have we learned?

- Plenty of policies but need to be backed up by data
- Need for evidence-based programmes
- Need for information dissemination and transparency
- Need for integration of data with planning and policy
- Best social monitoring / social data practices being refined and codified



The realities of the PNG environment

- Little evidence of evidence-based policy
 - Not just a PNG problem
- Highly politicised local environments, especially around resource projects
 - Increasing share of budget politicised
 - DDAs as 'fiefdoms'
- Information transmission, flows and reception take specific forms among many
 - Traditional forms of knowledge generation, flow and reception still important



What are the ways forward?

- Data/ indicators that are fit for purpose... D4D.
- Incentivise data collection/ measurement
- DDA's and Strategy on Statistics and opportunity

What are the ways forward?(2)

Multi-layered approach

- National-level system: Broad guidelines and standards across all DDAs for reporting and transparency. HDI/ SDG based, keep it simple and cheap, organised around Vision 2050. Audited and linked to DSIP/ LLSIP
- Locally, D4D to reflect specific environment at DDA level: DDA data person/ unit to support LLG/ District plans, driven by context/ circumstances/ agendas, working with other local players – companies / NGOs/ students/ communities



Summary

- UNDP National Human Development Report – ‘data lite’, but context and thematically driven
- Failure of social monitoring programmes because they haven’t produced data that are relevant to local agendas and contexts
- So... D4D – systems and processes that adapt to and fit local contexts, that produce data that are locally relevant (as well as coordinating what is needed nationally)

